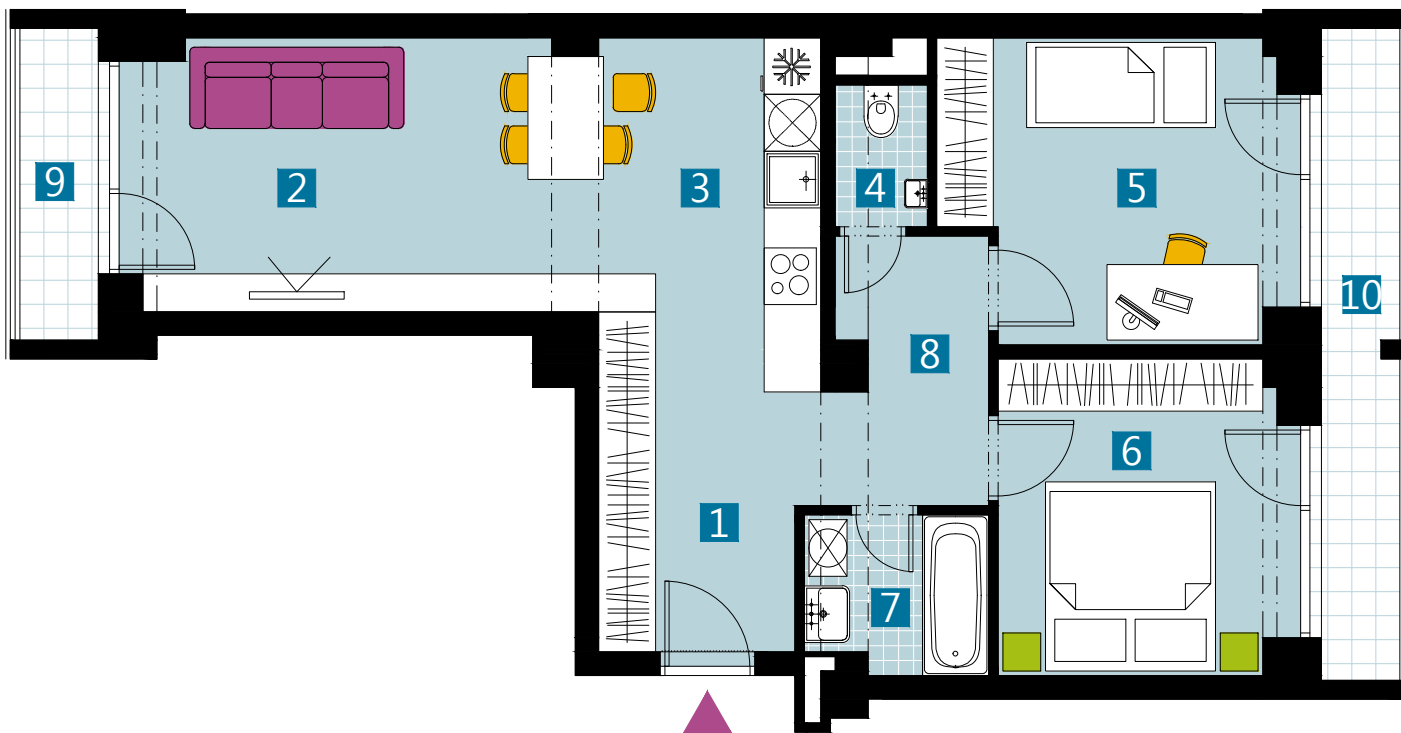


# KUBIK

BYTOVÝ DOM



0 1 2 3 4 5 M 1:80

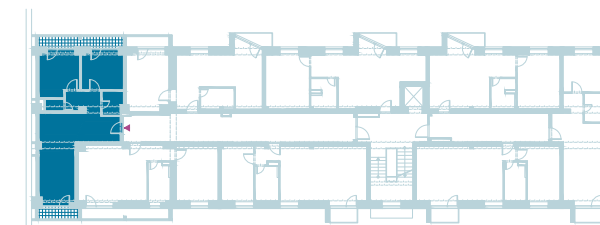
I pôdorys je spracovaný na marketingové účely I zariadenie predmety a ich rozmiestnenie má len ilustračný charakter  
I floor plan is processed for marketing purposes I furniture and its placement is only for illustration

## BYT B10U / FLAT B10U

3 izbový byt / 3 rooms flat

1. vstupná predsieň	/ lobby	0 7, 2 4 m <sup>2</sup>
2. obývacia izba	/ living room	1 2, 9 9 m <sup>2</sup>
3. kuchyňa	/ kitchen	0 9, 1 1 m <sup>2</sup>
4. wc	/ toilet	0 1, 4 6 m <sup>2</sup>
5. izba	/ room	1 1, 3 6 m <sup>2</sup>
6. izba	/ room	1 0, 3 4 m <sup>2</sup>
7. kúpeľňa	/ bathroom	0 3, 1 5 m <sup>2</sup>
8. chodba	/ corridor	0 4, 9 6 m <sup>2</sup>
9. balkón	/ balcony	0 3, 0 1 m <sup>2</sup>
10. balkón	/ balcony	0 6, 2 3 m <sup>2</sup>

**CELKOVÁ PLOCHA / TOTAL 60,61 m<sup>2</sup>**



v chod B / entrance B

schéma pôdorysu 2. NP  
/ scheme of the second floor

vigroup

Dorastenecká 46, 831 07 Bratislava  
[www.vigroup.sk](http://www.vigroup.sk)