



KUBIK

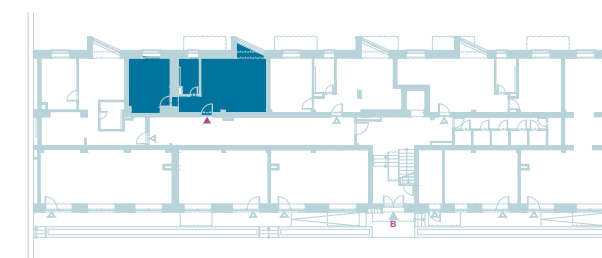
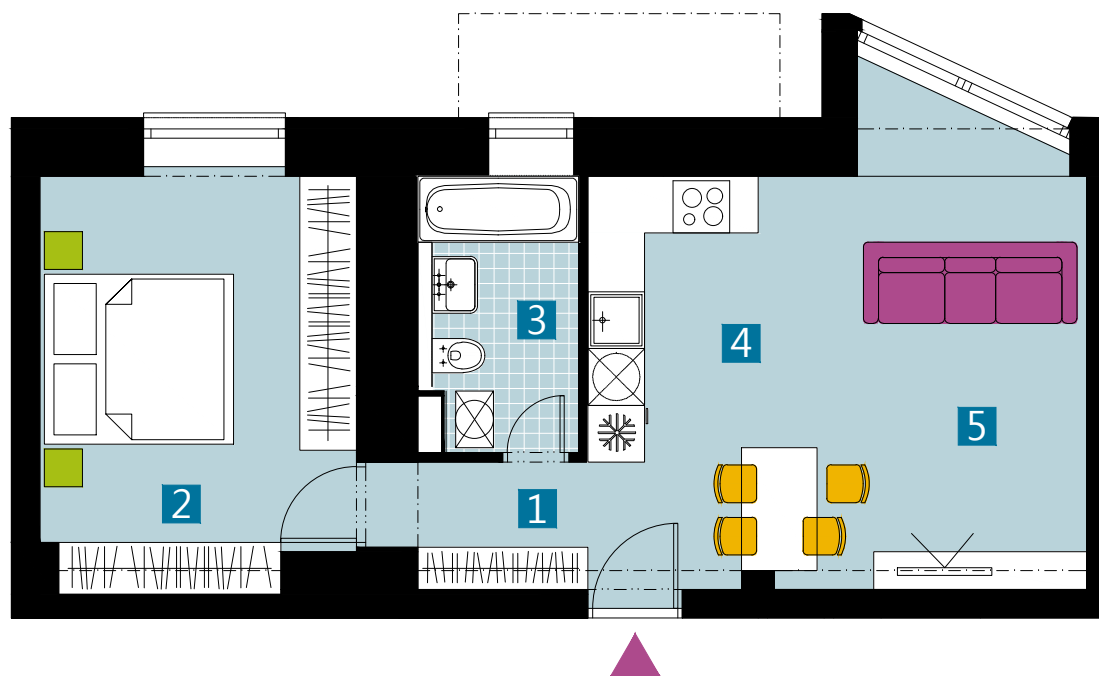
BYTOVÝ DOM

BYT B3U / FLAT B3U

2 izbový byt / 2 rooms flat

| | | |
|---------------------|---------------|--------------------------|
| 1. vstupná predsieň | / lobby | 0 4 , 6 4 m ² |
| 2. izba | / room | 1 4 , 5 0 m ² |
| 3. kúpeľňa | / bathroom | 0 4 , 7 3 m ² |
| 4. kuchyňa | / kitchen | 0 7 , 6 4 m ² |
| 5. obývacia izba | / living room | 1 5 , 7 0 m ² |

CELKOVÁ PLOCHA / TOTAL 47,21 m²



v chod B / entrance B

schéma pôdorysu 1. NP
/ scheme of the first floor



0 1 2 3 4 5 M 1:80

I pôdorys je spracovaný na marketingové účely I zariadenie predmety a ich rozmiestnenie má len ilustračný charakter
I floor plan is processed for marketing purposes I furniture and its placement is only for illustration

vigroup

Dorastenecká 46, 831 07 Bratislava
www.vigroup.sk